

WILDLIFE CORRIDORS

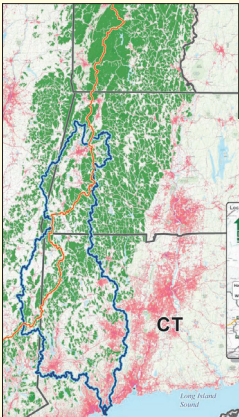


The Nature Conservancy has been working on BERKSHIRE WILDLIFE LINKAGES with

other groups to preserve & connect green spaces from Canada through New England, even right here in Lee, down the Hudson Highlands, into New Jersey and beyond. This is a CORRIDOR for animals to safely migrate.

Climate change, urbanization, changes to land & forests are encouraging animals to move to find food, shelter, mates and new home territories. There can be more mixing of the gene pool which will help species survive the changes. And humans are helping with unique & practical solutions-bridges & tunnels!

You can watch our presentation Lee Land Trust Wildlife Camera and The Nature Conservancy - Berkshire Wildlife Linkages on Community Television for Southern Berkshire (CTSB), "Public" channel 1301. It can also be found online by going to their youtube page: youtube.com/@ctsbtv. Here you can see some of the critters & understand their problems.



Map showing where the corridor runs through Massachusetts
www.hvatoday.org

Follow the Forest map of the corridor showing where a linkage needs to be created over Rte. 20 and I-90 in East Lee
hvatoday.org/connecting-forest-corridors



P.O. Box 702, Lee, MA 01238



Photo credit: Brett Amy Thelen

Photo credit: © Amanda Dekosa



"For the Love of Nature"
- Donato Cedrone

www.theleelandtrust.org



In 2015, the Lee Land Trust was able to accept a generous donation of 30 acres from James A. Williams with support from The Citizens for Preserving South Lee. This land is on Church Street and is a protected conservation area.

We now have an attractive sign, designed by Heather at Pixley Sign Company, naming our area: **WILLIAMS WAY**. You can see it on Church St. in So. Lee.

At this time, there is no access or trail. We hope to explore the property & inventory species that call this land home!

TIME TO EXPLORE YOUR BACKYARD OR NEIGHBORHOOD!

The snow will melt, plants will emerge to bloom & animals will be moving, searching for homes, food & mates. **KEEP YOUR EYES OPEN** and learn about your 'WILDER' neighbors, **ADOPT** a tree to see who uses it through the year (oak trees have lots of critters visiting) and remember to **SUPPORT YOUR POLLINATORS** with native plants.



The Lee Land Trust continues to participate with the Town of Lee in stewardship to trails and projects involved with use of our open spaces. We join with others, like the Lee Greener Gateway Committee, to conserve, educate & protect our natural resources - the land, water & forests. The future of our Town depends on how we manage today. We hope others will join us & volunteer to keep our Town growing responsibly. **HAPPY TRAILS**

What is the Lee Land Trust?

We are an independent, non-profit, tax-deductible Trust founded in 1992 AND we are your neighbors! We want to preserve Lee's natural and historic heritage by working with individuals or organizations to protect their lands. We envision saving our farmlands, woods and water ways.

Lee has many offerings of sites to explore. You can begin with **Ferncliff Reservation** just off downtown Lee, **Longcope Park** on Church Street in South Lee, **Golden Hill Town Forest** on Golden Hill Road, **Lee Sandy Beach**, the Trust's new joint venture with the Trustees for our **Donato's Trail** on Rt. 20 in East Lee and our large state forests at **October Mountain** and **Beartown**. Learn more about us at www.theleelandtrust.org.